

maandelijks

Datum	Meterstand						T° kmi				
dagen	Gas	Elektriciteit		water			Link	T° buiten KNX	T° living KNX	au	inkom
mm/yy		dag	nacht	koud	warm	regen	T° [°C]	T° [°C]	T° [°C]		T° [°C]
1 Oct 09	161	19525	16900	11563	1377	4357					
1 Nov 09	31	285	19657	17069	13556	2699	11.3				
1 Dec 09	30	489	19816	17280	16513	4400	9.7				
2 Jan 10	32	833	20010	17525	19126	5944	2.9				
1 Feb 10	30	1172	20179	17765	21729	7413	0				
1 Mar 10	28	1473	20340	18001	24689	9062	2.5				
4 Apr 10	34	1680	20549	18293	28124	11013	6.7				
13 May 10	39	1784	20791	18587	32866	13016	10.3				
8 Jun 10	26	1818	20944	18795	35756	14325	11.2				
13 Jul 10	35	1842	21145	19113	39736	15810	17.4				
7 Aug 10	25	1859	21349	19329	42597	16870	20.5				
7 Sep 10	31	1881	21532	19561	45863	18372	17				
3 Oct 10	26	1920	21689	19785	48642	19475	14.2				
1 Nov 10	29	2049	21838	20010	51303	21134	10.6				
1 Dec 10	30	2313	22049	20256	54179	22462	6.1				
3 Jan 11	33	2750	22298	20584	57402	23970	-0.7				
1 Feb 11	29	3041	22494	20852	59960	25258	4				
17 Mar 11	44	3411	22754	21205	71506	31126	5.4				
2 Apr 11	16	3465	22830	21332	72936	31764	7.7				
1 May 11	29	3502	22947	21525	75889	33251	12.4				
22 May 11	21	3512	23032	21640	77974	34047	14.1				
12 Jun 11	21	3524	23142	21799	81493	34898	14.8				
9 Jul 11	27	3542	23277	21964	84136	36024	16.8				
30 Aug 11	52	3576	23577	22356	89866	38560	17.3		19	23.3	
14 Oct 11	45	3649	23812	22698	94535	40754	16.5		15	22.7	
16 Nov 11	33	3789	23996	22915	98026	42702	12.1		10	22.5	
16 Jan 12	61	4354	24418	23427	103236	46245	6.2		6.6	22.6	
3 Feb 12	18	4578	24546	23568	105985	47225	5.1		4.8	22.7	
16 Apr 12	73	5154	24994	24172	112986	51332	8.9		4.5	23.1	
2 May 12	16	5227	25097	24289	114593	52276	8.4		10.7	23.1	
5 Aug 12	95	5308	25550	24931	124420	57941	15.5		18.6	23.4	
5 Sep 12	31	5321	25734	25175	127575	59541	14.3		21.6	23.3	
1 Nov 12	57	5503	26004	25570	132876	62604	10		13.3	22.6	
7 Dec 12	36	5718	26252	25865	136655	64676	7.1		5.8	22.7	22
2 Jan 13	26	6059	26454	26114	138916	65868	5.1		4.2	23	21.7
6 Feb 13	35	6472	26671	26413	142330	67681	2.1		0.4	23	21.7
3 Mar 13	25	6778	26825	26627	144602	69003	1.4		3.8	23	21.7
9 Apr 13	37	7129	27031	26899	148227	71002	3		3	23.1	21.7
3 May 13	24	7210	27149	27026	150350	72274	9				21.12
11 Jun 13	39	7319	27331	27299	153924	74040	11.1				21
1 Jul 13	20	7335	27424	27429	155710	74870	15.8				

<http://www.meteo.be/meteo/view/nl/11661036-september+2013.html>

maandelijks

12 Aug 13	42	7354	27659	27688	159274	76308	147475	20.2
1 Sep 13	20	7364	27756	27827	161203	77147	149490	18.6
3 Oct 13	32	7418	27905	28017	163787	78265	152268	14.8
10 Nov 13	38	7592	28089	28265	167014	79865	156141	12.8
1 Dec 13	21	7794	28224	28450	168990	80780	158460	6.4
3 Jan 14	33	8098	28432	28700	171737	82147	161854	6.1
4 Feb 14	32	8391	28615	28974	174353	83374	165750	6.1
3 Mar 14	27	8625	28752	29185	177022	84632	168882	6.6
2 Apr 14	30	8764	28912	29388	179984	86032	172378	9.3
6 May 14	34	8846	29087	29607	183276	87549	176616	12.4
4 Jun 14	29	8897	29220	29785	185833	88594	180075	13.5
4 Jul 14	30	8914	29358	29955	188463	89656	183830	16.5
2 Sep 14	60	8963	29644	30347	194524	92068	190550	17.5
11 Nov 14	70	9136	29993	30797	200579	95000	198575	14
2 Dec 14	21	9276	30119	30940	202504	95802	200494	8.8

	Dagelijks gemiddelde					
	Gas [m ³]	elektriciteit [kWh]		Water [L]		
	Øgas [m ³]	Ødag [kWh]	Ønacht [kWh]	Økw [L]	Øww [L]	Ørw [L]
1 Nov 09	3.97	4.26	5.45	21.65	42.65	66.84
1 Dec 09	6.81	5.3	7.03	41.87	56.7	98.2
2 Jan 10	10.75	6.06	7.66	33.41	48.25	90.31
1 Feb 10	11.3	5.63	8	37.8	48.97	68.97
1 Mar 10	10.75	5.75	8.43	46.82	58.89	87.18
4 Apr 10	6.09	6.15	8.59	43.65	57.38	93.21
13 May 10	2.67	6.21	7.54	70.23	51.36	249.9
8 Jun 10	1.31	5.88	8	60.81	50.35	100.69
13 Jul 10	0.69	5.74	9.09	71.29	42.43	136.83
7 Aug 10	0.68	8.16	8.64	72.04	42.4	116
7 Sep 10	0.71	5.9	7.48	56.9	48.45	82.35
3 Oct 10	1.5	6.04	8.62	64.46	42.42	106.19
1 Nov 10	4.45	5.14	7.76	34.55	57.21	98.24
1 Dec 10	8.8	7.03	8.2	51.6	44.27	77.33
3 Jan 11	13.24	7.55	9.94	51.97	45.7	86.67
1 Feb 11	10.03	6.76	9.24	43.79	44.41	79.83
17 Mar 11	8.41	5.91	8.02	129.05	133.36	85.89
2 Apr 11	3.38	4.75	7.94	49.5	39.88	117.81
1 May 11	1.28	4.03	6.66	50.55	51.28	137.55
22 May 11	0.48	4.05	5.48	61.38	37.9	41.52

maandelijks

12 Jun 11	0.57	5.24	7.57	127.05	40.52	145.33
9 Jul 11	0.67	5	6.11	56.19	41.7	62.52
30 Aug 11	0.65	5.77	7.54	61.42	48.77	85.67
14 Oct 11	1.62	5.22	7.6	55	48.76	81.44
16 Nov 11	4.24	5.58	6.58	46.76	59.03	84.85
16 Jan 12	9.26	6.92	8.39	27.33	58.08	91.15
3 Feb 12	12.44	7.11	7.83	98.28	54.44	128.33
16 Apr 12	7.89	6.14	8.27	39.64	56.26	93.41
2 May 12	4.56	6.44	7.31	41.44	59	140.88
5 Aug 12	0.85	4.77	6.76	43.81	59.63	80.28
5 Sep 12	0.42	5.94	7.87	50.16	51.61	121.35
1 Nov 12	3.19	4.74	6.93	39.26	53.74	69.14
7 Dec 12	5.97	6.89	8.19	47.42	57.56	114.19
2 Jan 13	13.12	7.77	9.58	41.12	45.85	107.92
6 Feb 13	11.8	6.2	8.54	45.74	51.8	94
3 Mar 13	12.24	6.16	8.56	38	52.88	134.4
9 Apr 13	9.49	5.57	7.35	43.95	54.03	104.32
3 May 13	3.38	4.92	5.29	35.46	53	122.92
11 Jun 13	2.79	4.67	7	46.36	45.28	141.79
1 Jul 13	0.8	4.65	6.5	47.8	41.5	137.5
12 Aug 13	0.45	5.6	6.17	50.62	34.24	112.02
1 Sep 13	0.5	4.85	6.95	54.5	41.95	100.75
3 Oct 13	1.69	4.66	5.94	45.81	34.94	86.81
10 Nov 13	4.58	4.84	6.53	42.82	42.11	101.92
1 Dec 13	9.62	6.43	8.81	50.52	43.57	110.43
3 Jan 14	9.21	6.3	7.58	41.82	41.42	102.85
4 Feb 14	9.16	5.72	8.56	43.41	38.34	121.75
3 Mar 14	8.67	5.07	7.81	52.26	46.59	116
2 Apr 14	4.63	5.33	6.77	52.07	46.67	116.53
6 May 14	2.41	5.15	6.44	52.21	44.62	124.65
4 Jun 14	1.76	4.59	6.14	52.14	36.03	119.28
4 Jul 14	0.57	4.6	5.67	52.27	35.4	125.17
2 Sep 14	0.82	4.77	6.53	60.82	40.2	112
11 Nov 14	2.47	4.99	6.43	44.61	41.89	114.64
2 Dec 14	6.67	6	6.81	53.48	38.19	91.38

Verbruik per maand					
Gas [m ³]	elektriciteit [KWH]		Water [L]		
Gas [m ³]	dag [KWH]	nacht [KWH]	kw [L]	ww [L]	rw [L]

Maandelijks Delta						
Gas [m ³]	elektriciteit [KWH]		Water [L]			
Δgas [m ³]	Δdag [KWH]	Δnacht [KWH]	Δkw [L]	Δww [L]	Δrw [L]	T° [°C]

maandelijks

1 Nov 09	123.2	132	169	671	1322	2072							
1 Dec 09	204.3	159	211	1256	1701	2946	81.1	27	42	585	379	874	-1.6
2 Jan 10	344.1	194	245	1069	1544	2890	139.8	35	34	-187	-157	-56	-6.8
1 Feb 10	339.1	169	240	1134	1469	2069	-5	-25	-5	65	-75	-821	-2.9
1 Mar 10	301	161	236	1311	1649	2441	-38.1	-8	-4	177	180	372	2.5
4 Apr 10	207	209	292	1484	1951	3169	-94	48	56	173	302	728	4.2
13 May 10	104	242	294	2739	2003	9746	-103	33	2	1255	52	6577	3.6
8 Jun 10	34	153	208	1581	1309	2618	-70	-89	-86	-1158	-694	-7128	0.9
13 Jul 10	24	201	318	2495	1485	4789	-10	48	110	914	176	2171	6.2
7 Aug 10	17	204	216	1801	1060	2900	-7	3	-102	-694	-425	-1889	3.1
7 Sep 10	22	183	232	1764	1502	2553	5	-21	16	-37	442	-347	-3.5
3 Oct 10	39	157	224	1676	1103	2761	17	-26	-8	-88	-399	208	-2.8
1 Nov 10	129	149	225	1002	1659	2849	90	-8	1	-674	556	88	-3.6
1 Dec 10	264	211	246	1548	1328	2320	135	62	21	546	-331	-529	-4.5
3 Jan 11	437	249	328	1715	1508	2860	173	38	82	167	180	540	-6.8
1 Feb 11	291	196	268	1270	1288	2315	-146	-53	-60	-445	-220	-545	4.7
17 Mar 11	370	260	353	5678	5868	3779	79	64	85	4408	4580	1464	1.4
2 Apr 11	54	76	127	792	638	1885	-316	-184	-226	-4886	-5230	-1894	2.3
1 May 11	37	117	193	1466	1487	3989	-17	41	66	674	849	2104	4.7
22 May 11	10	85	115	1289	796	872	-27	-32	-78	-177	-691	-3117	1.7
12 Jun 11	12	110	159	2668	851	3052	2	25	44	1379	55	2180	0.7
9 Jul 11	18	135	165	1517	1126	1688	6	25	6	-1151	275	-1364	2
30 Aug 11	34	300	392	3194	2536	4455	16	165	227	1677	1410	2767	0.5
14 Oct 11	73	235	342	2475	2194	3665	39	-65	-50	-719	-342	-790	-0.8
16 Nov 11	140	184	217	1543	1948	2800	67	-51	-125	-932	-246	-865	-4.4
16 Jan 12	565	422	512	1667	3543	5560	425	238	295	124	1595	2760	-5.9
3 Feb 12	224	128	141	1769	980	2310	-341	-294	-371	102	-2563	-3250	-1.1
16 Apr 12	576	448	604	2894	4107	6819	352	320	463	1125	3127	4509	3.8
2 May 12	73	103	117	663	944	2254	-503	-345	-487	-2231	-3163	-4565	-0.5
5 Aug 12	81	453	642	4162	5665	7627	8	350	525	3499	4721	5373	7.1
5 Sep 12	13	184	244	1555	1600	3762	-68	-269	-398	-2607	-4065	-3865	-1.2
1 Nov 12	182	270	395	2238	3063	3941	169	86	151	683	1463	179	-4.3
7 Dec 12	215	248	295	1707	2072	4111	33	-22	-100	-531	-991	170	-2.9
2 Jan 13	341	202	249	1069	1192	2806	126	-46	-46	-638	-880	-1305	-2
6 Feb 13	413	217	299	1601	1813	3290	72	15	50	532	621	484	-3
3 Mar 13	306	154	214	950	1322	3360	-107	-63	-85	-651	-491	70	-0.7
9 Apr 13	351	206	272	1626	1999	3860	45	52	58	676	677	500	1.6
3 May 13	81	118	127	851	1272	2950	-270	-88	-145	-775	-727	-910	6
11 Jun 13	109	182	273	1808	1766	5530	28	64	146	957	494	2580	2.1
1 Jul 13	16	93	130	956	830	2750	-93	-89	-143	-852	-936	-2780	4.7
12 Aug 13	19	235	259	2126	1438	4705	3	142	129	1170	608	1955	4.4
1 Sep 13	10	97	139	1090	839	2015	-9	-138	-120	-1036	-599	-2690	-1.6
3 Oct 13	54	149	190	1466	1118	2778	44	52	51	376	279	763	-3.8
10 Nov 13	174	184	248	1627	1600	3873	120	35	58	161	482	1095	-2
1 Dec 13	202	135	185	1061	915	2319	28	-49	-63	-566	-685	-1554	-6.4
3 Jan 14	304	208	250	1380	1367	3394	102	73	65	319	452	1075	-0.3
4 Feb 14	293	183	274	1389	1227	3896	-11	-25	24	9	-140	502	0
3 Mar 14	234	137	211	1411	1258	3132	-59	-46	-63	22	31	-764	0.5
2 Apr 14	139	160	203	1562	1400	3496	-95	23	-8	151	142	364	2.7

maandelijks

6 May 14	82	175	219	1775	1517	4238	-57	15	16	213	117	742	3.1
4 Jun 14	51	133	178	1512	1045	3459	-31	-42	-41	-263	-472	-779	1.1
4 Jul 14	17	138	170	1568	1062	3755	-34	5	-8	56	17	296	3
2 Sep 14	49	286	392	3649	2412	6720	32	148	222	2081	1350	2965	1
11 Nov 14	173	349	450	3123	2932	8025	124	63	58	-526	520	1305	-3.5
2 Dec 14	140	126	143	1123	802	1919	-33	-223	-307	-2000	-2130	-6106	-5.2

1m³gas = 10.0109 kWh
 1kWh = 3.60 MJ

conversiefactor essent : 9.79

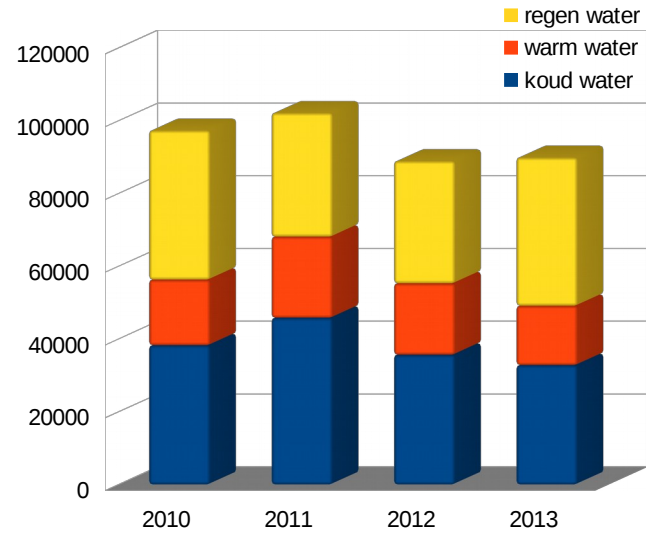
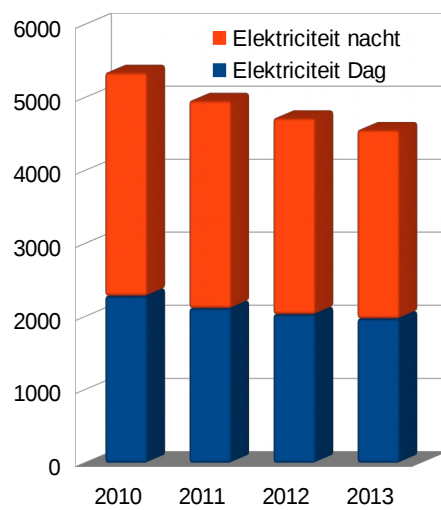
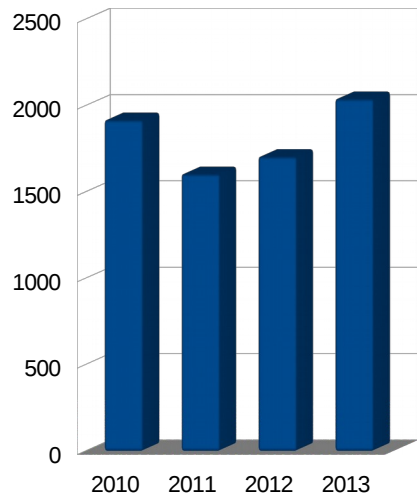
	EnergieVerbruik per maand	Energieverbruik volgens EPB berekening
	[MJ]	[MJ]
1 Nov 09	5417	6399
1 Dec 09	8517	12126
2 Jan 10	13682	16003
1 Feb 10	13399	16204
1 Mar 10	12015	13475
4 Apr 10	9084	12059
13 May 10	5587	7459
8 Jun 10	2495	3374
13 Jul 10	2712	2415
7 Aug 10	2110	2691
7 Sep 10	2268	2596
3 Oct 10	2743	2383
1 Nov 10	5883	6399
1 Dec 10	10930	12126
3 Jan 11	17446	16003
1 Feb 11	11905	16204
17 Mar 11	15220	13475
2 Apr 11	2630	12059

maandelijks

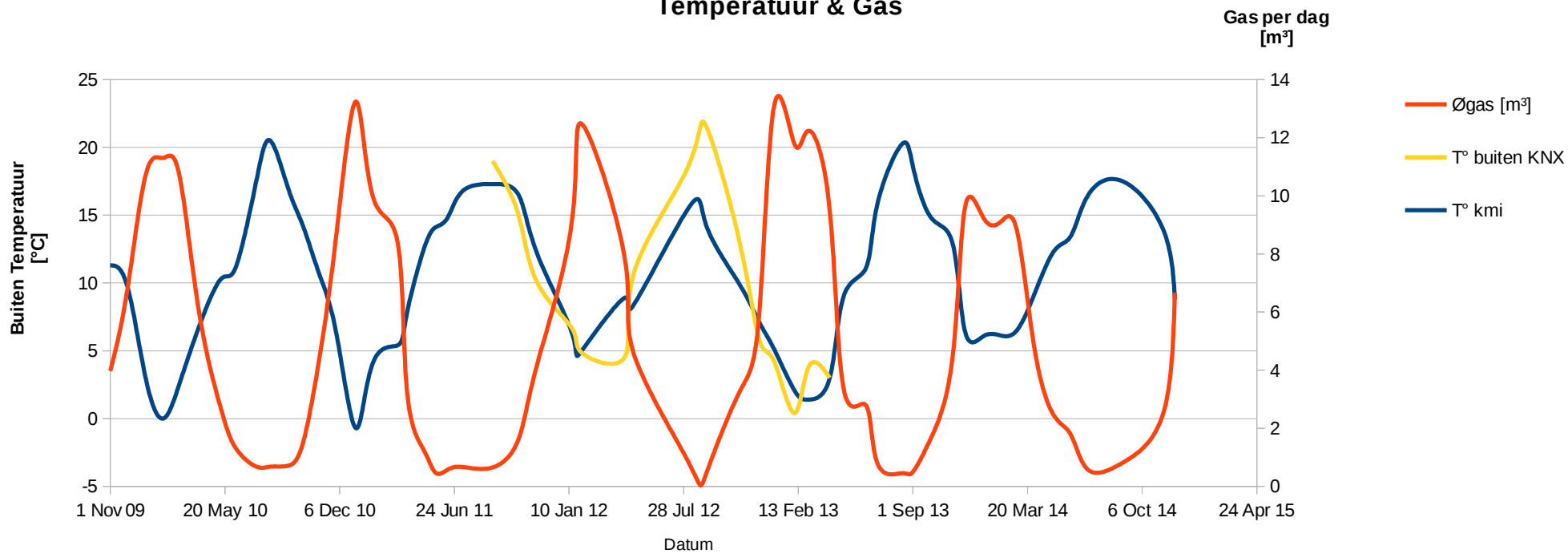
1 May 11	2417	7459
22 May 11	1072	3374
12 Jun 11	1390	2415
9 Jul 11	1713	2691
30 Aug 11	3687	2596
14 Oct 11	4645	2383
16 Nov 11	6367	6399
16 Jan 12	23233	12126
3 Feb 12	8846	16003
16 Apr 12	24045	16204
2 May 12	3359	13475
5 Aug 12	6791	12059
5 Sep 12	1998	7459
1 Nov 12	8795	3374
7 Dec 12	9516	12126
2 Jan 13	13900	16003
6 Feb 13	16726	16204
3 Mar 13	12341	13475
9 Apr 13	14357	12059
3 May 13	3731	7459
11 Jun 13	5472	3374

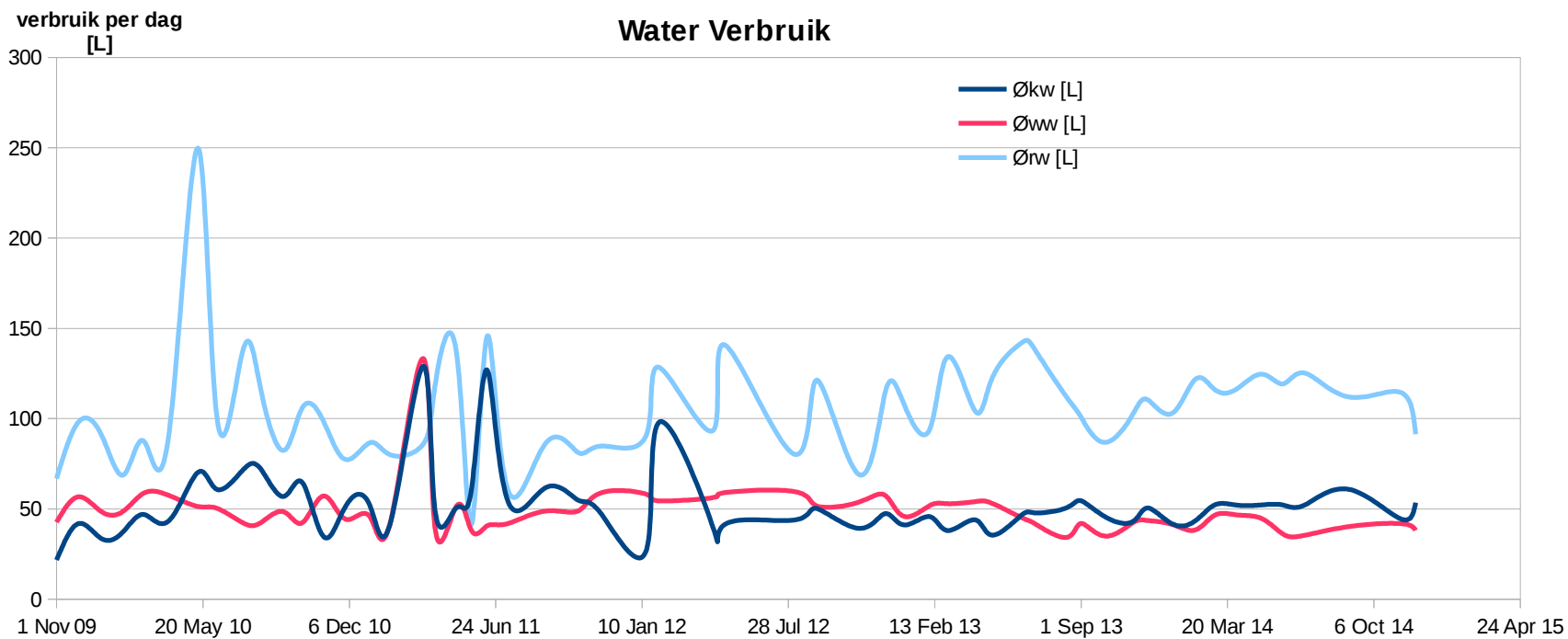
JAARBASIS						
Datum	Meterstand					
mm/yy	Gas	Elektriciteit		water		
		dag	nacht	koud	warm	regen
2 Jan 10	833	20010	17525	19126	5944	12265
3 Jan 11	2750	22298	20584	57402	23970	53340
16 Jan 12	4354	24418	23427	103236	46245	87400
2 Jan 13	6059	26454	26114	138916	65868	121030
3 Jan 14	8098	28432	28700	171737	82147	161854

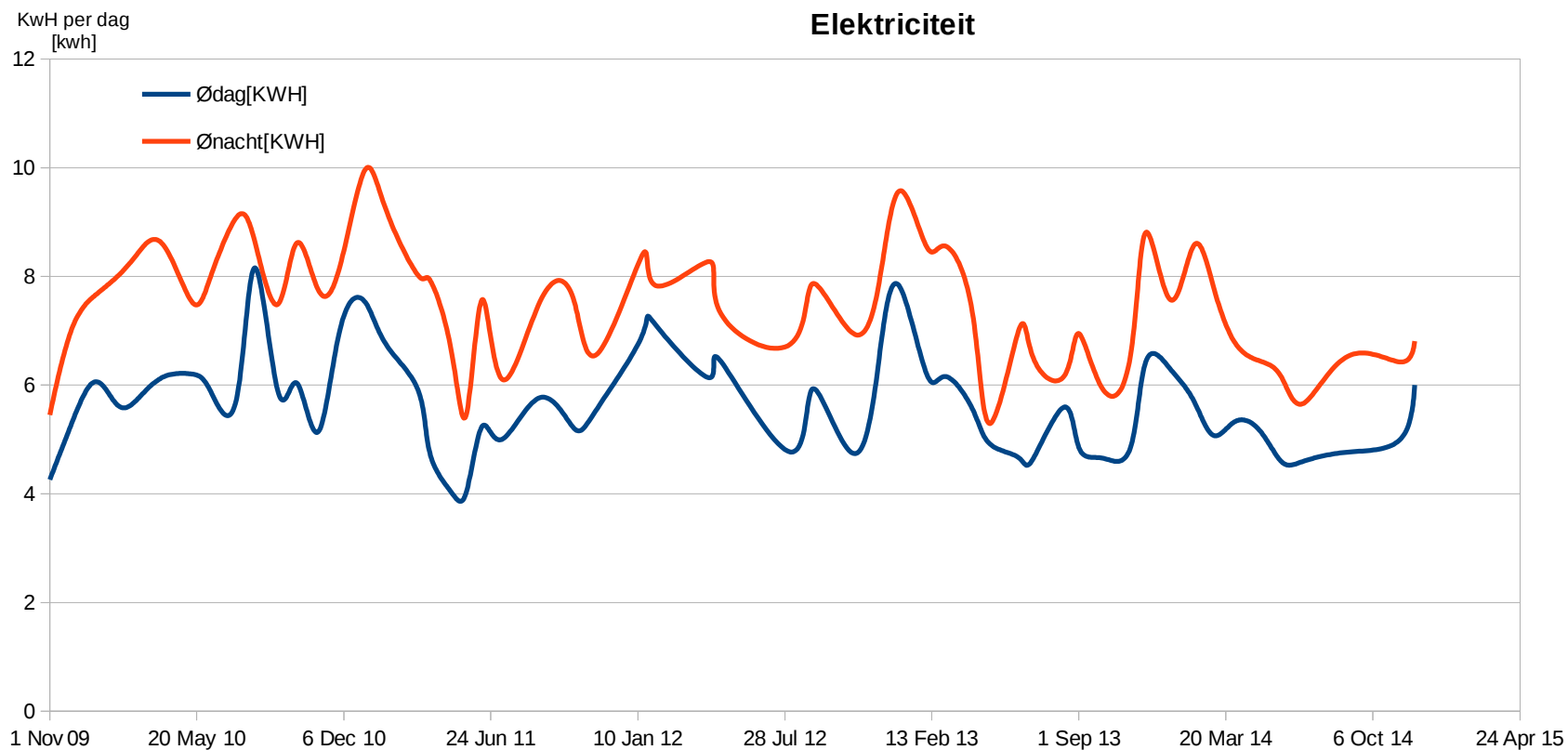
JAARBASIS						
Jaar	gas	Elektriciteit Dag	Elektriciteit nacht	koud water	warm water	regen water
2010	1917.1	2288	3059	38276	18026	41075
2011	1604	2120	2843	45834	22275	34060
2012	1705	2036	2687	35680	19623	33630
2013	2039	1978	2586	32821	16279	40824



Temperatuur & Gas







aardgas optibudget: (1/1/2013)

vaste vergoeding 35€/jaar

<25.000kWh : $(0.72+0.1 \times \text{NGpi}) \times 0.95$

>25.000kWh : $0.72+0.1 \times \text{NGpi}$

electrabel optibudget (1/1/2013)

vaste vergoeding 75€/jaar

piekuren:

< 2500kWh: $(0.3 + 0.1485 \times \text{Epi}) \times 0.9$

> 2500kWh: $(0.3 + 0.1485 \times \text{Epi})$

daluren

< 2500kWh: $(0.0765 + 0.078 \times \text{Epi}) \times 0.9$

> 2500kWh: $(0.0765 + 0.078 \times \text{Epi})$